

Cypress Creek Watershed Protection Plan Committee Meeting

Sandra S. Arismendez, PhD

November 19, 2020



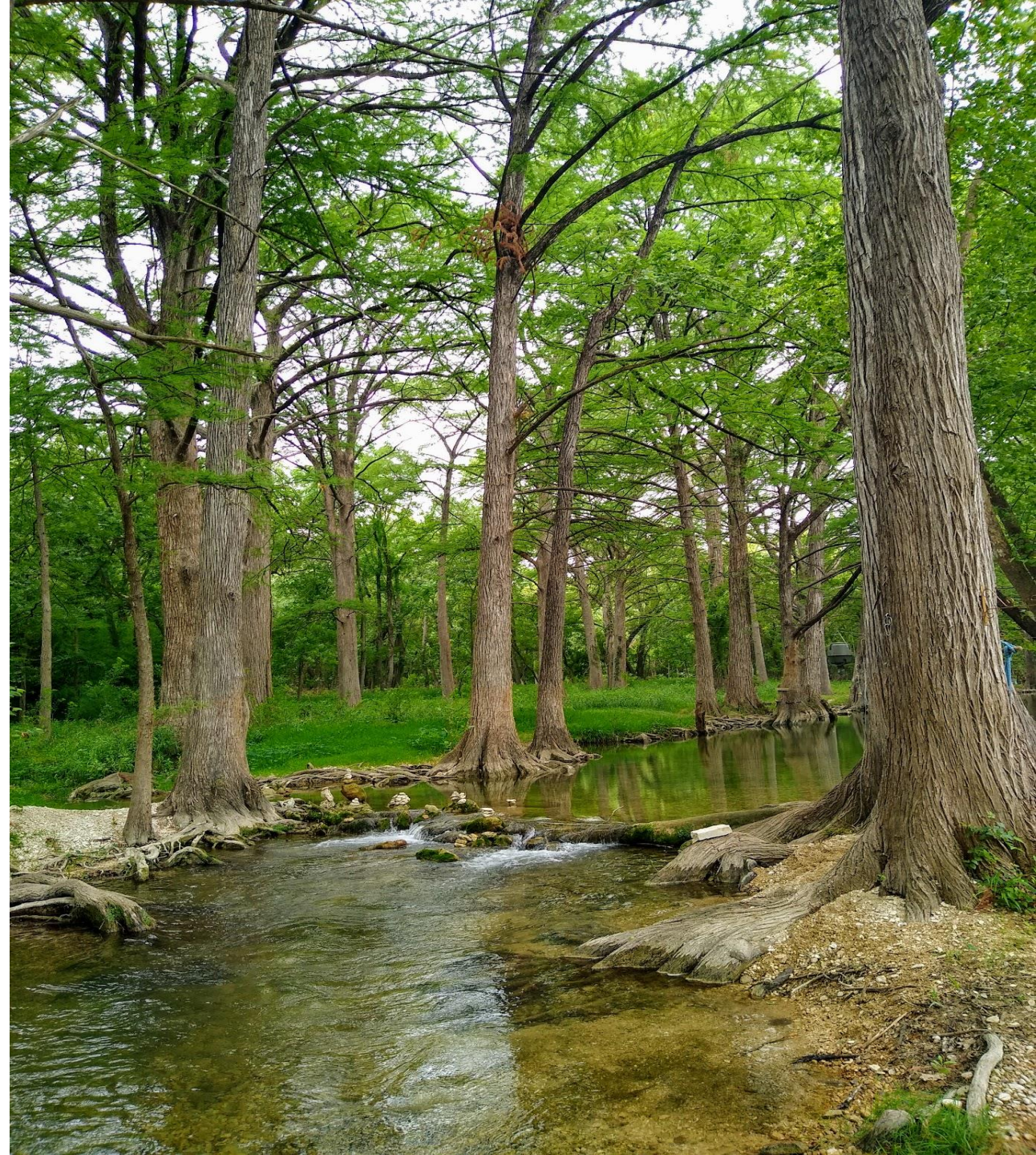
THE MEADOWS CENTER
FOR WATER AND THE ENVIRONMENT

TEXAS STATE UNIVERSITY

PURPOSE

To present an update on water quality monitoring results from Cypress Creek.

- Clean Rivers Program Quarterly Monitoring
- Texas Stream Team Monthly Monitoring



Cypress Creek

Quarterly CRP Monitoring

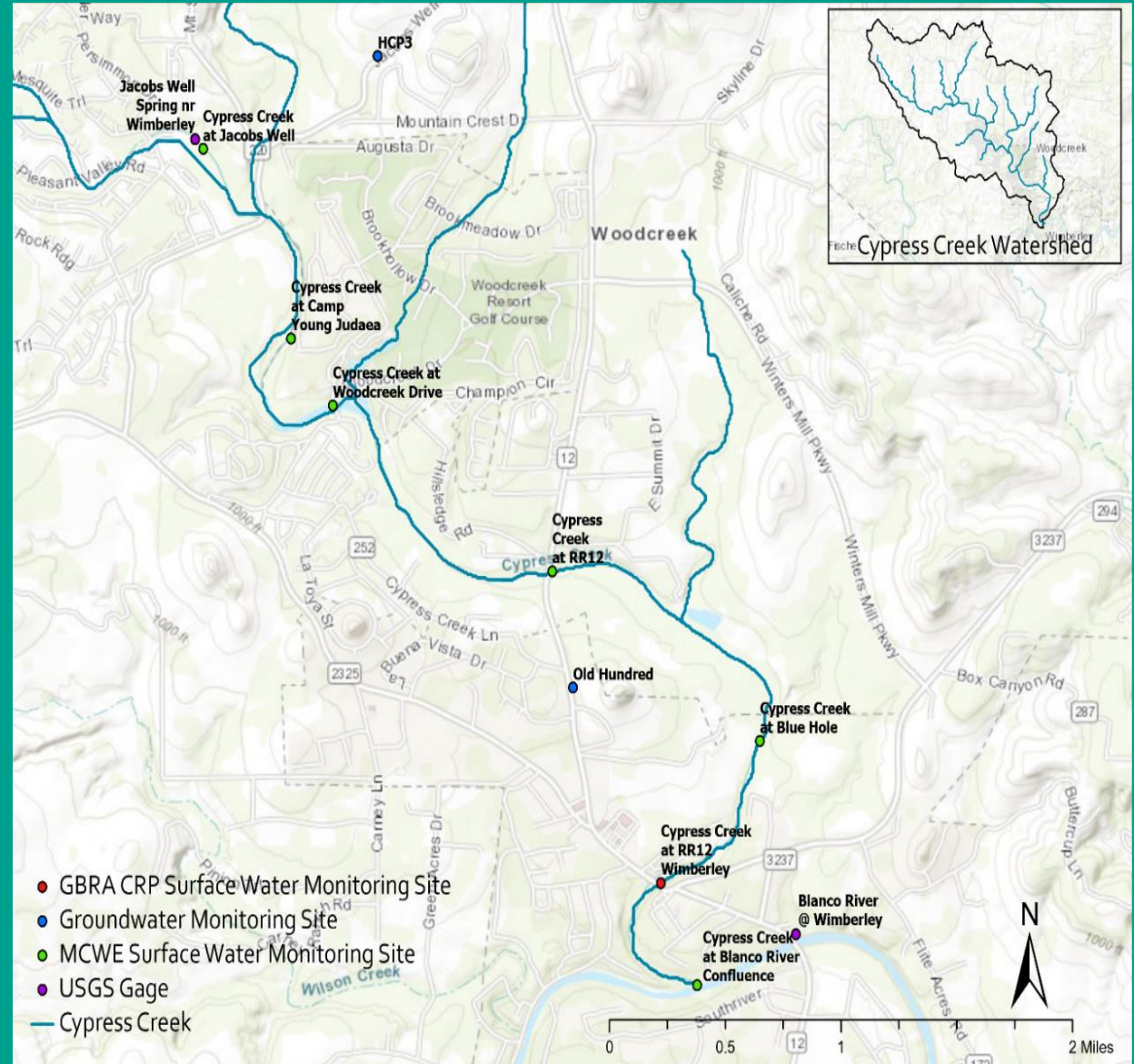
Purpose: To collect water quality data in support of the WPP.

Six locations:

- 12677 – CC @ Jacob’s Well
- 22109 – CC @ Camp Young Judea
- 22110 – CC @ Woodcreek Dr.
- 12676 – CC @ RR12
- 12675 – CC @ Blue Hole*
- 12674 – CC @ FM12 in Wimberley (GBRA)
- 12673 – CC @ Blanco Riv. Confluence*

Parameters:

- | | |
|----------------|-------------------------|
| Field | Flow |
| Conventionals | <i>E. coli</i> Bacteria |
| 24-hour DO (*) | |



Cypress Creek

Texas Stream Team 2020

Monitoring

Site	Date	E. Coli (MPN/100 ml)	pH (s.u.)	DO (mg/l)	Conductivity (µS/cm)	Water Temp (°C)
80443 – CC @ Old Kyle Rd	7/9/2020	280	8.0	6.6	600	25.0
80443	8/18/2020	73.3	6.99	NR	NR	26.0
80443	9/10/2020	140	8.0	6.6	560	22.0
80443	10/16/2020	260	7.9	6.5	600	20.0
80926 - CC @ RR12	8/18/2020	446.5	6.99	NR	NR	26.0
80926	10/21/2020	89.95	6.94	5.71	632	23.0
81627 – CC @ Blanco River	8/18/2020	843	6.99	4.6	638	26
81627	10/21/2020	959.5	7.0	5.3	640	23
80415 – CC @ Blue Hole	10/21/2020	36.65	6.95	4.82	628	23

Cypress Creek

Clean Rivers Program 2020 Monitoring

Site	Date	E. Coli (MPN/100 ml)	pH (s.u.)	DO (mg/l)	Conductivity (µS/cm)	Water Temp (°C)
12677 – Jacob’s Well	6/30/2020	3	7.0	6.1	578	21.0
	9/10/2020	76	6.8	5.6	568	20.8
22109 - CYJ	6/30/2020	28	7.5	6.8	585	23.6
	9/10/2020	190	7.4	6.5	539	21.9
22110 – Woodcreek Dr.	6/30/2020	98	7.7	6.6	580	24.8
	9/10/2020	110	7.4	6.0	553	23.5
12676 – RR12	6/30/2020	79	7.7	6.4	576	25.4
	9/10/2020	120	7.6	7.0	539	23.6
12675 – Blue Hole	6/30/2020	160	7.6	6.2	587	24.8
	9/10/2020	180	7.5	5.7	552	23.4
12673 – Blanco River confluence	6/30/2020	110	8.1	8.6	572	25.1
	9/10/2020	460	7.8	8.1	521	22.7

Cypress Creek

Clean Rivers Program 2020 Monitoring

Site	Date	Flow (cfs)	TSS (mg/L)	Ammonia (mg/L)	Total Phosphorus (mg/L)	Nitrate (mg/L)
12677 – Jacob’s Well	6/30/2020	8.1	<0.50	<0.10	<0.02	0.52
	9/10/2020	11.8	<0.50	<0.10	<0.02	0.659
22109 - CYJ	6/30/2020	8.1	1.5	<0.10	<0.02	0.358
	9/10/2020	11.8	2.6	<0.10	<0.02	0.435
22110 – Woodcreek Dr.	6/30/2020	8.1	1.6	<0.10	<0.02	0.277
	9/10/2020	11.8	1.6	<0.10	<0.02	0.235
12676 – RR12	6/30/2020	6.5	0.7	<0.10	<0.02	0.28
	9/10/2020	5.8	3.0	<0.10	<0.02	0.198
12675 – Blue Hole	6/30/2020	NR	1.3	<0.10	<0.02	0.255
	9/10/2020	NR	0.6	<0.10	<0.02	0.154
12673 – Blanco River confluence	6/30/2020	7.9	3.1	<0.10	<0.02	0.232
	9/10/2020	10.4	2.6	<0.10	<0.02	0.145

Cypress Creek

24 HR Monitoring

(September 9-11, 2020)

Parameter	Units	Blue Hole	Blanco River Confluence
Temperature, Water - 24HR Avg	°C	24.7	22.1
Temperature, Water - 24HR Max	°C	25.4	22.6
Temperature, Water - 24HR Min	°C	23.4	21.8
Specific Conductance - 24HR Avg	µS/cm	544	541
Specific Conductance - 24HR Max	µS/cm	561	548
Specific Conductance - 24HR Min	µS/cm	536	524
PH - 24HR Maximum Value	s.u.	7.7	7.9
PH - 24HR Minimum Value	s.u.	7.4	7.9

Cypress Creek

24 HR Monitoring

(September 9-11, 2020)

Parameter	Units	Blue Hole	Blanco River Confluence
Dissolved Oxygen - 24-Hour Min.	mg/L	4.9	8
Dissolved Oxygen - 24-Hour Max.	mg/L	6.2	8.6
Dissolved Oxygen - 24-Hour Avg.	mg/L	5.9	8.1
Dissolved Oxygen - # of Measurements in 24-HRS	Counts	98	98

Cypress Creek

24 HR Monitoring
(October 7-9, 2020)

Parameter	Units	Blue Hole	Blanco River Confluence
Temperature, Water - 24HR Avg	°C	21.6	21.2
Temperature, Water - 24HR Max	°C	21.9	21.8
Temperature, Water - 24HR Min	°C	21.2	20.9
Specific Conductance - 24HR Avg	μS/cm	586	570
Specific Conductance - 24HR Max	μS/cm	590	572
Specific Conductance - 24HR Min	μS/cm	582	568
PH - 24HR Maximum Value	s.u.	7.5	7.9
PH - 24HR Minimum Value	s.u.	7.4	7.8

Cypress Creek

24 HR Monitoring
(October 7-9, 2020)

Parameter	Units	Blue Hole	Blanco River Confluence
Dissolved Oxygen - 24-Hour Min.	mg/L	5.1	8
Dissolved Oxygen - 24-Hour Max.	mg/L	5.9	9
Dissolved Oxygen - 24-Hour Avg.	mg/L	5.6	8.2
Dissolved Oxygen - # of Measurements in 24-HRS	Counts	98	98

Contact

Spring Lake Hall

201 San Marcos Springs Drive

San Marcos TX 78666

Sandra.arismendez@txstate.edu

(512) 245-8570